

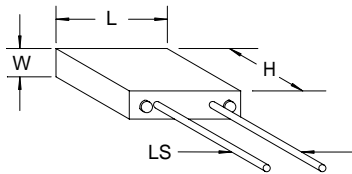


RL-SERIES

ULTRA PRECISION METAL FILM RESISTORS

PRECISION RESISTIVE PRODUCTS, INC.
202 MACK LANE, MEDIAPOLIS, IA 52637
(319)394-9131 FAX (319)394-9280
E-Mail info@prpinc.com
PRP HOME PAGE <http://www.prpinc.com>

- Radial Leads
- Small Size
- Low TC
- High Stability



STAND-OFF- .015 THICK X .040 DIA.

Dimensions inches(mm)

Style	Height	Length	Width	Lead * Spacing	Lead Dia.	Lead Length
RL1	.300 Max. (7.62)	.300 Max. (7.62)	.100 Max. (2.54)	.150 (3.81)	.020 (.508)	1.00 ±.062 (25.4 ±1.57)
RL3	.300 Max. (7.62)	.300 Max. (7.62)	.100 Max. (2.54)	.150 (3.81)	.020 (.508)	1.00 ±.062 (25.4 ±1.57)

* Available with .200 lead spacing when ordered as a PR 9446

Specifications

Style	Temperature Coefficient PPM/°C	Resistance Range(Ω)	Standard Tolerance @ 25°C	Wattage @85°C	Working Voltage
RL1	20	20 thru 500K	1%,.5% .25%,.10% .05%,.02% .01%	.1W	350V
	15				
	10				
	5				
	2				
RL3	20	20 thru 500K	1%,.5% .25%,.10% .05%,.02% .01%	.3W	350V
	15				
	10				
	5				
	2				

How to Order

Sample Part

RL3 TC10 1K ±0.1%

Style

Temp. Coef.

Resistance Value

Tolerance

Add "T" at the end of the Style portion of the part number for lead free termination.

Standard Decade Values

Operating Temperature Range -55°C to 155°C

Packaging

Ref: EIA RS-186 (where applicable)

Typical Performance (100ohms-100K)	%ΔR	Typical Performance (100ohms-100K)	%ΔR
1000 Hr. Load Life at 85°C	.1W	Effects of Solder	<0.01
	.3W	Insulation Resistance	>100M
Humidity	±0.04	Noise	<-30dB
Thermal Shock	±0.01	Voltage Coefficient	<0.05 PPM/V
Short Time Overload	±0.01	Shelf Life	<50 PPM/Yr.

Temperature Coefficients

TC20 = 0±20 PPM/°C -20 TO +85°C
 TC15 = 0±15 PPM/°C -20 TO +85°C
 TC10 = 0±10 PPM/°C -20 TO +85°C
 TC 5 = 0±5 PPM/°C -20 TO +85°C
 TC 2 = 0±2 PPM/°C -20 TO +85°C

Lead Material

OFHC with 60/40 Tin/Lead Coating
 or OFHC with Tin Coating

